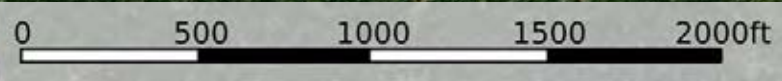




 Boundary

L-2300313

Keya Paha County, Nebraska, 159.9 AC +/-



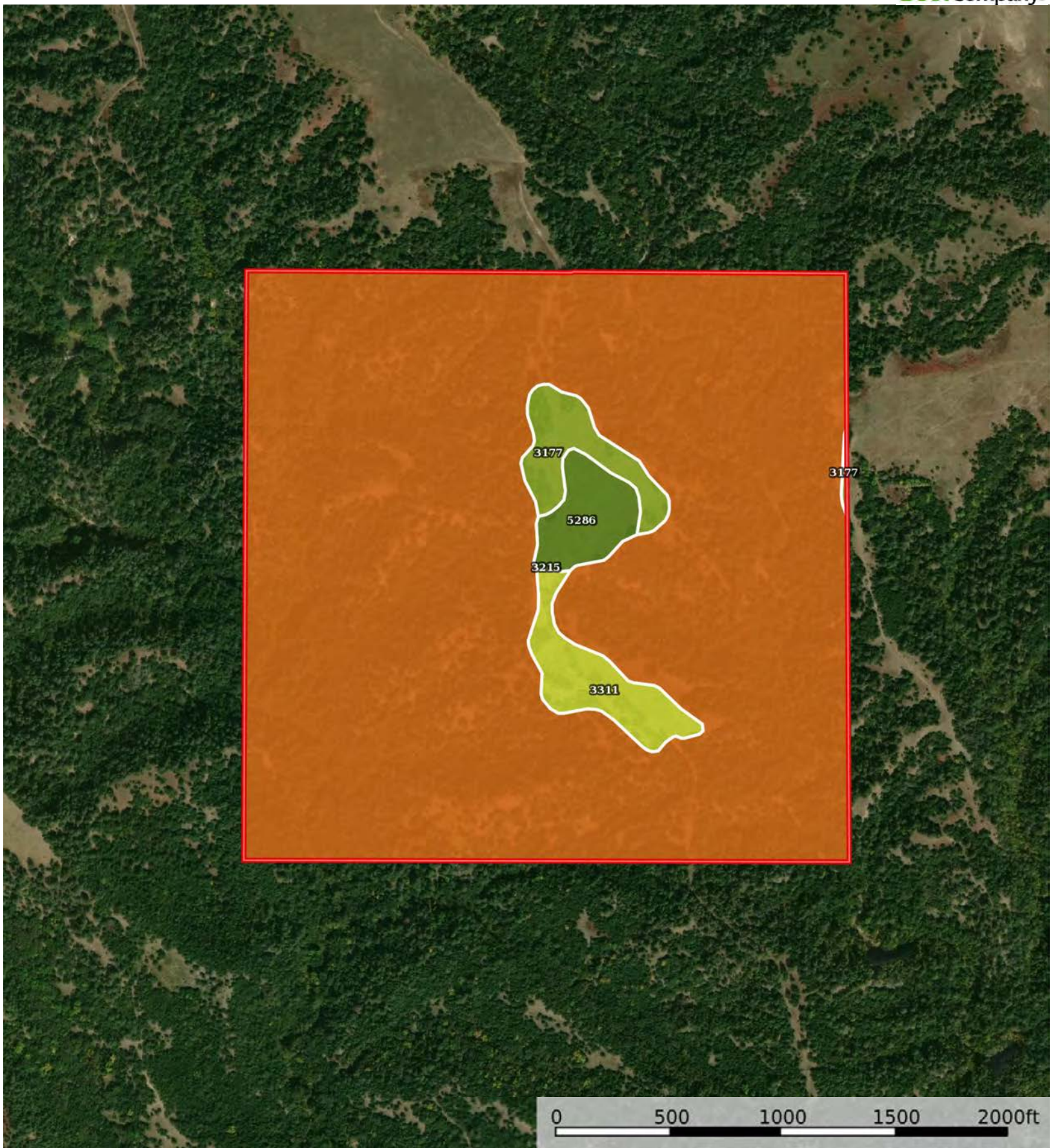
 Boundary




The information contained herein was obtained from sources deemed to be reliable. Land id™ Services makes no warranties or guarantees as to the completeness or accuracy thereof.

L-2300313

Keya Paha County, Nebraska, 159.9 AC +/-



 Boundary



The information contained herein was obtained from sources deemed to be reliable. Land id™ Services makes no warranties or guarantees as to the completeness or accuracy thereof.

Boundary 160.18 ac

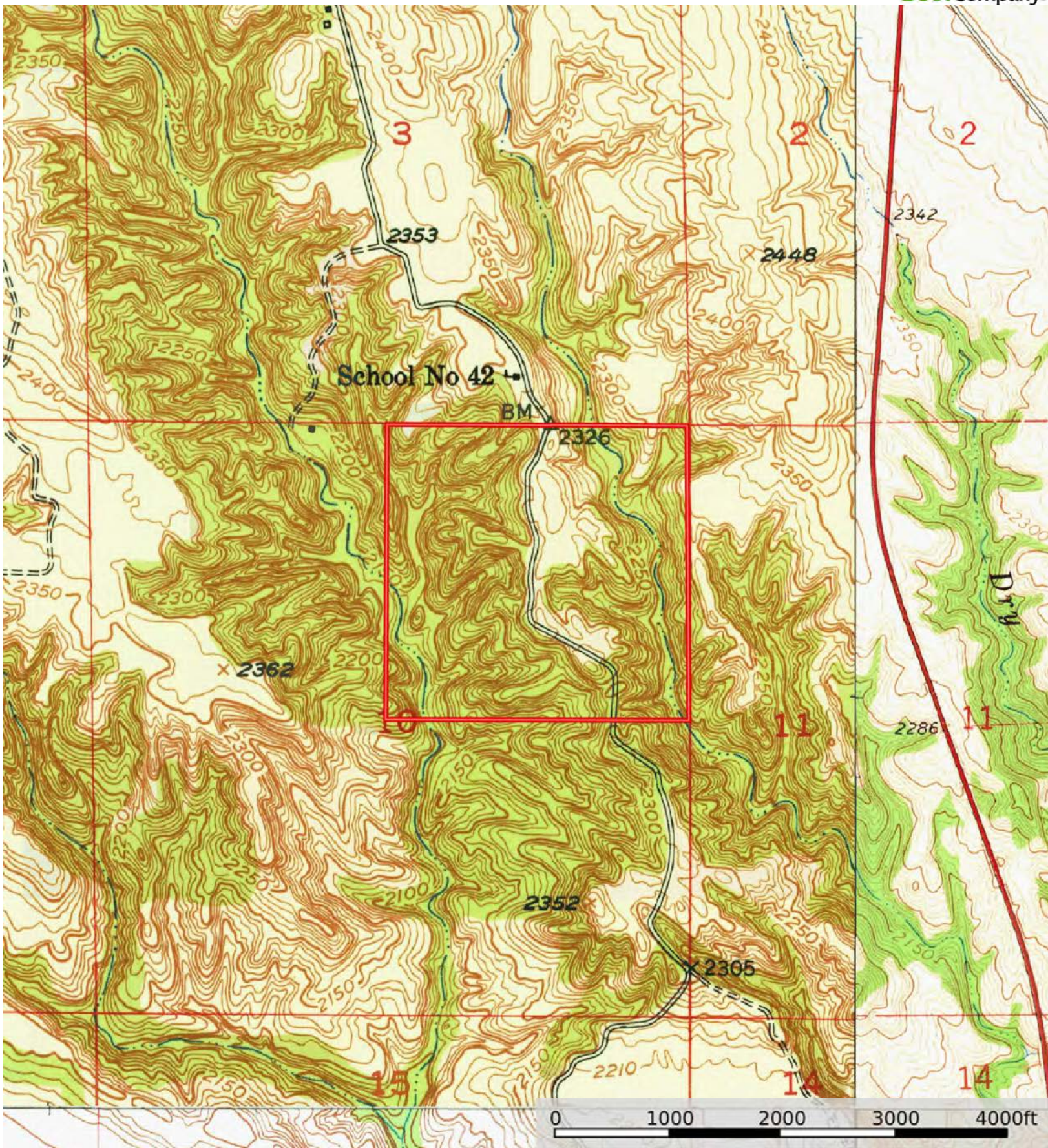
SOIL CODE	SOIL DESCRIPTION	ACRES	%	CPI	NCCPI	CAP
3215	Longpine-Ronson-Duda complex, 15 to 70 percent slopes	147.67	92.18	0	11	7s
3311	Ronson-Anselmo fine sandy loams, 6 to 11 percent slopes	4.7	2.93	0	36	4e
3177	Holt variant fine sandy loam, 3 to 6 percent slopes	4.05	2.53	0	40	3e
5286	Vetal loam, 1 to 3 percent slopes	3.76	2.35	0	53	2e
TOTALS		160.18(*)	100%	-	13.45	6.69

(\*) Total acres may differ in the second decimal compared to the sum of each acreage soil. This is due to a round error because we only show the acres of each soil with two decimal.



L-2300313

Keya Paha County, Nebraska, 159.9 AC +/-



Boundary