

Farm: Conklin
Field: Conklin
(56.08 ac) 2021

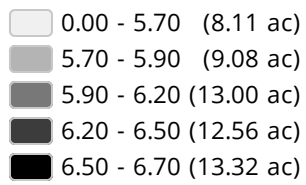
Nutrient Map



Farm: Conklin
Field: Conklin
(56.08 ac) 2021

Nutrient Map

pH - (0-6 in)



Minimum: 5.30
Average: 6.15
Maximum: 7.00



Farm: Conklin
Field: Conklin
(56.08 ac) 2021

Nutrient Map

pH Buffer - (0-6 in)

- 0.00 - 5.70 (0.00 ac)
- 5.70 - 6.00 (0.00 ac)
- 6.00 - 6.50 (3.33 ac)
- 6.50 - 7.00 (52.75 ac)
- 7.00 - 7.30 (0.00 ac)

Minimum: 6.24

Average: 6.71

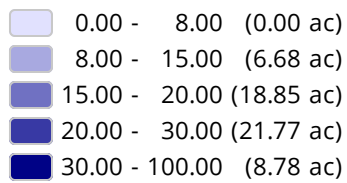
Maximum: 6.92



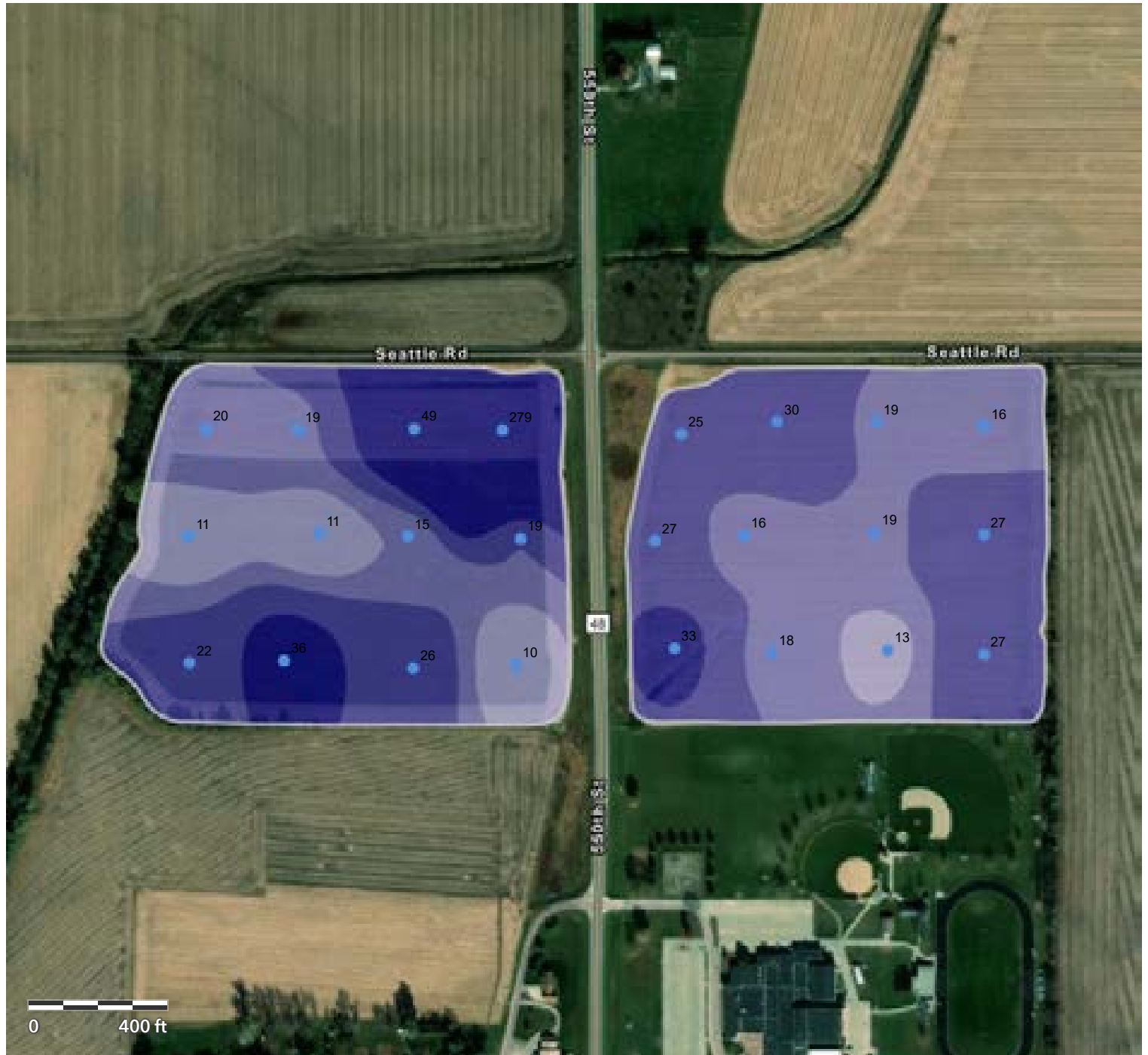
Farm: Conklin
Field: Conklin
(56.08 ac) 2021

Nutrient Map

P (ppm) - (0-6 in)



Minimum: 10.00 ppm
Average: 32.79 ppm
Maximum: 279.00 ppm



Farm: Conklin
Field: Conklin
(56.08 ac) 2021

Nutrient Map

K (ppm) - (0-6 in)

- 0.00 - 120.00 (10.65 ac)
- 120.00 - 160.00 (34.38 ac)
- 160.00 - 200.00 (4.79 ac)
- 200.00 - 240.00 (1.37 ac)
- 240.00 - 500.00 (4.88 ac)

Minimum: 91.00 ppm

Average: 163.63 ppm

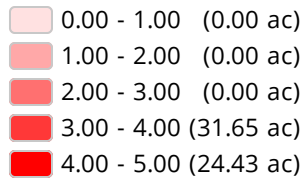
Maximum: 622.00 ppm



Farm: Conklin
Field: Conklin
(56.08 ac) 2021

Nutrient Map

OM (%) - (0-6 in)



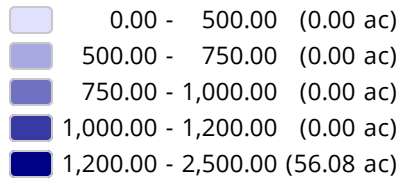
Minimum: 3.30 %
Average: 4.05 %
Maximum: 5.40 %



Farm: Conklin
Field: Conklin
(56.08 ac) 2021

Nutrient Map

Ca (ppm) - (0-6 in)



Minimum: 1,627.00 ppm
Average: 2,156.75 ppm
Maximum: 3,199.00 ppm



Farm: Conklin
Field: Conklin
(56.08 ac) 2021

Nutrient Map

Mg (ppm) - (0-6 in)

- 0.00 - 75.00 (0.00 ac)
- 75.00 - 150.00 (0.00 ac)
- 150.00 - 200.00 (6.07 ac)
- 200.00 - 300.00 (30.11 ac)
- 300.00 - 600.00 (19.90 ac)

Minimum: 167.00 ppm

Average: 293.13 ppm

Maximum: 525.00 ppm



Farm: Conklin
Field: Conklin
(56.08 ac) 2021

Nutrient Map

CEC (meq/100g) - (0-6 in)

- 0.00 - 5.00 (0.00 ac)
- 5.00 - 10.00 (0.00 ac)
- 10.00 - 15.00 (23.71 ac)
- 15.00 - 20.00 (22.48 ac)
- 20.00 - 25.00 (9.89 ac)

Minimum: 11.10 meq/100g
Average: 15.90 meq/100g
Maximum: 22.20 meq/100g



Mortensen Frm 8967

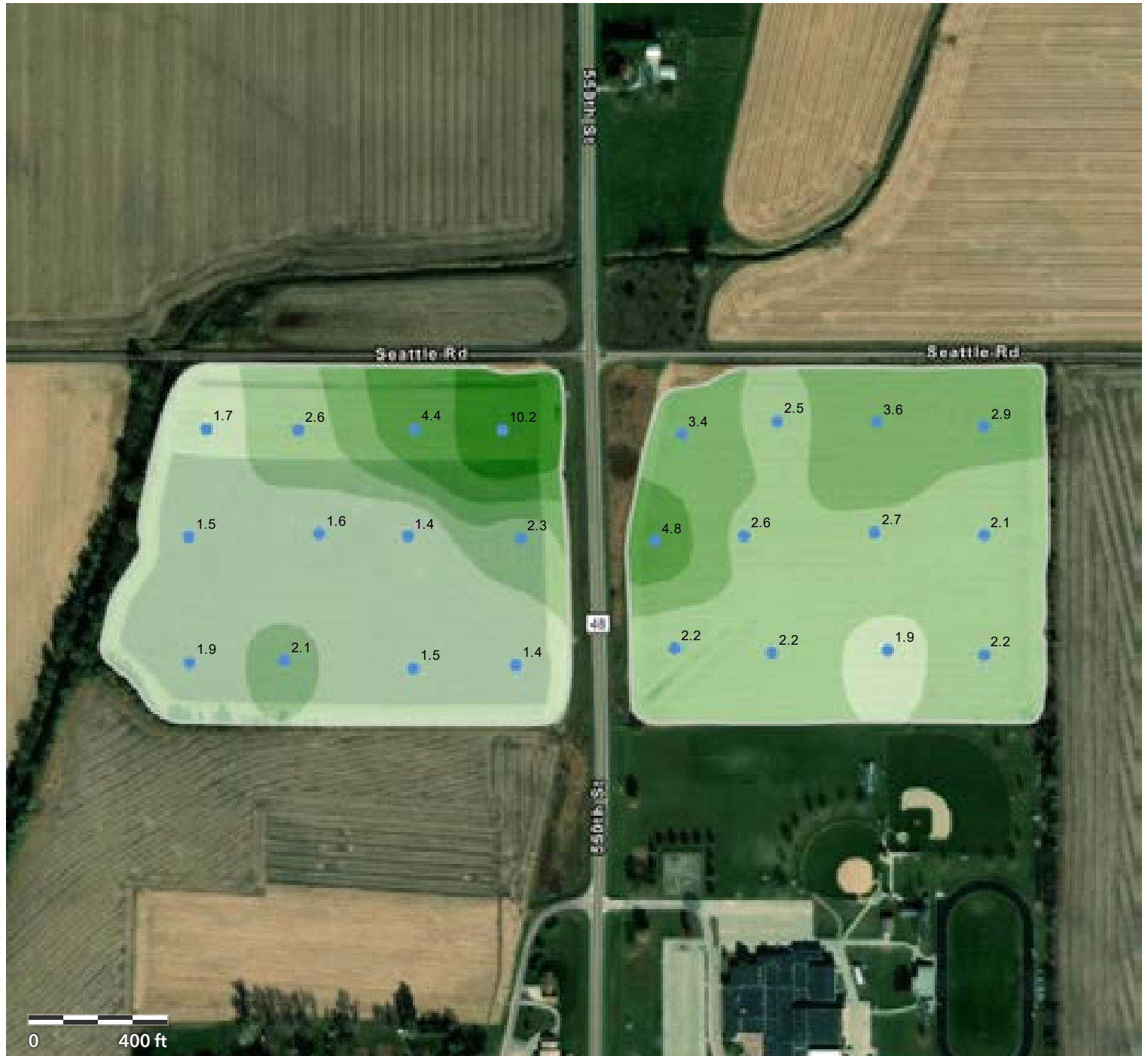
Farm: Conklin
Field: Conklin
(56.08 ac) 2021

Nutrient Map

K % - (0-6 in)

- 1.40 - 2.02 (19.65 ac)
- 2.02 - 2.75 (20.93 ac)
- 2.75 - 3.95 (10.22 ac)
- 3.95 - 6.71 (3.19 ac)
- 6.71 - 10.20 (2.08 ac)

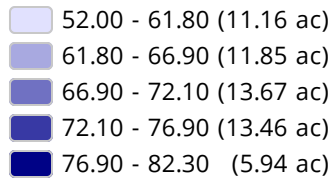
Minimum: 1.40 %
 Average: 2.74 %
 Maximum: 10.20 %



Farm: Conklin
Field: Conklin
(56.08 ac) 2021

Nutrient Map

Ca % - (0-6 in)



Minimum: 52.00 %

Average: 68.68 %

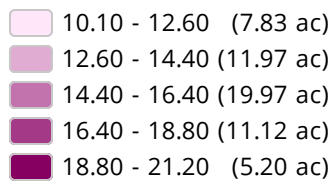
Maximum: 82.30 %



Farm: Conklin
Field: Conklin
(56.08 ac) 2021

Nutrient Map

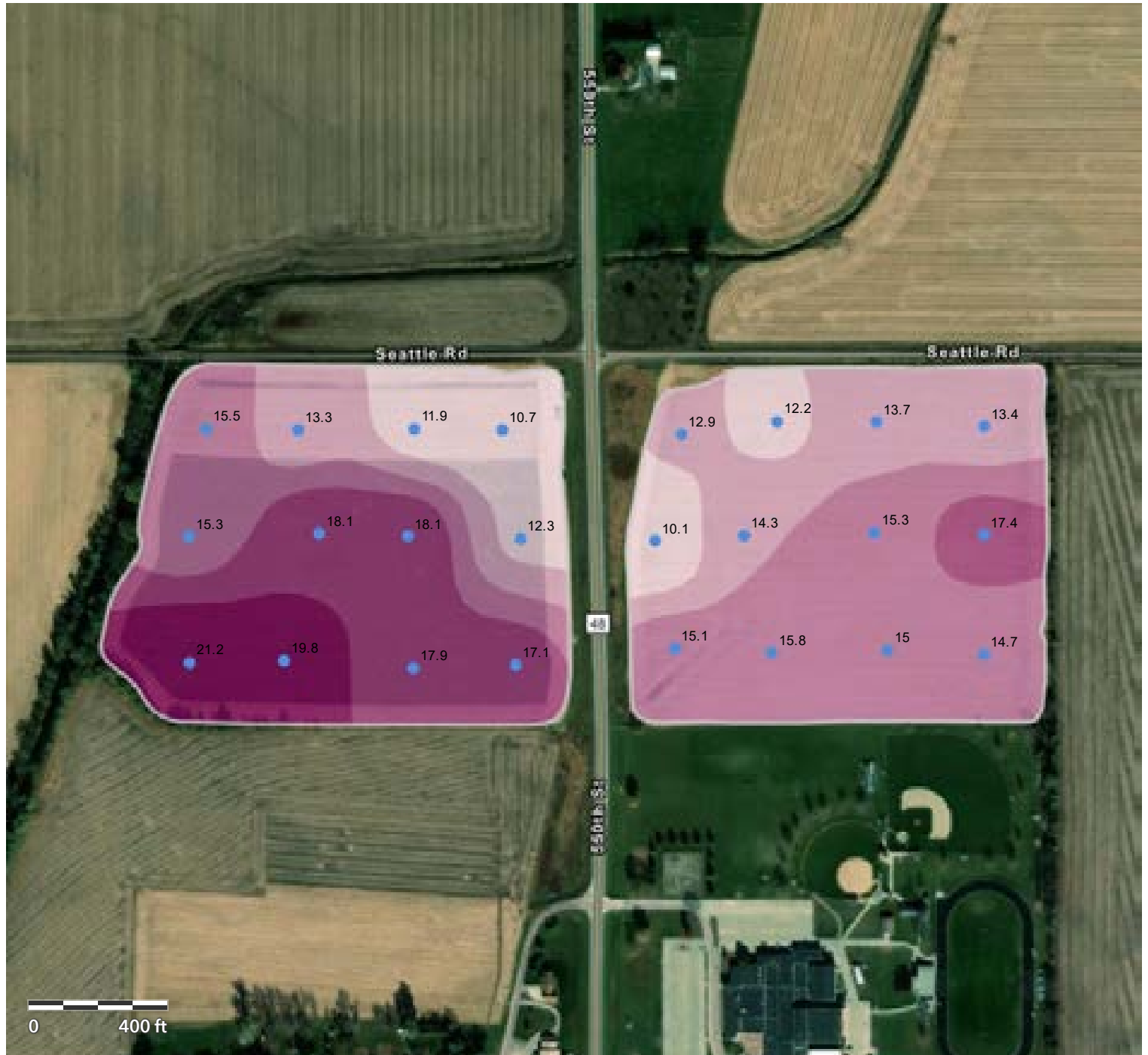
Mg % - (0-6 in)



Minimum: 10.10 %

Average: 15.05 %

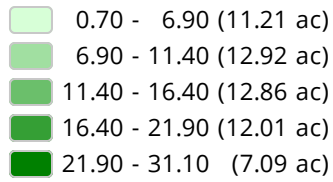
Maximum: 21.20 %



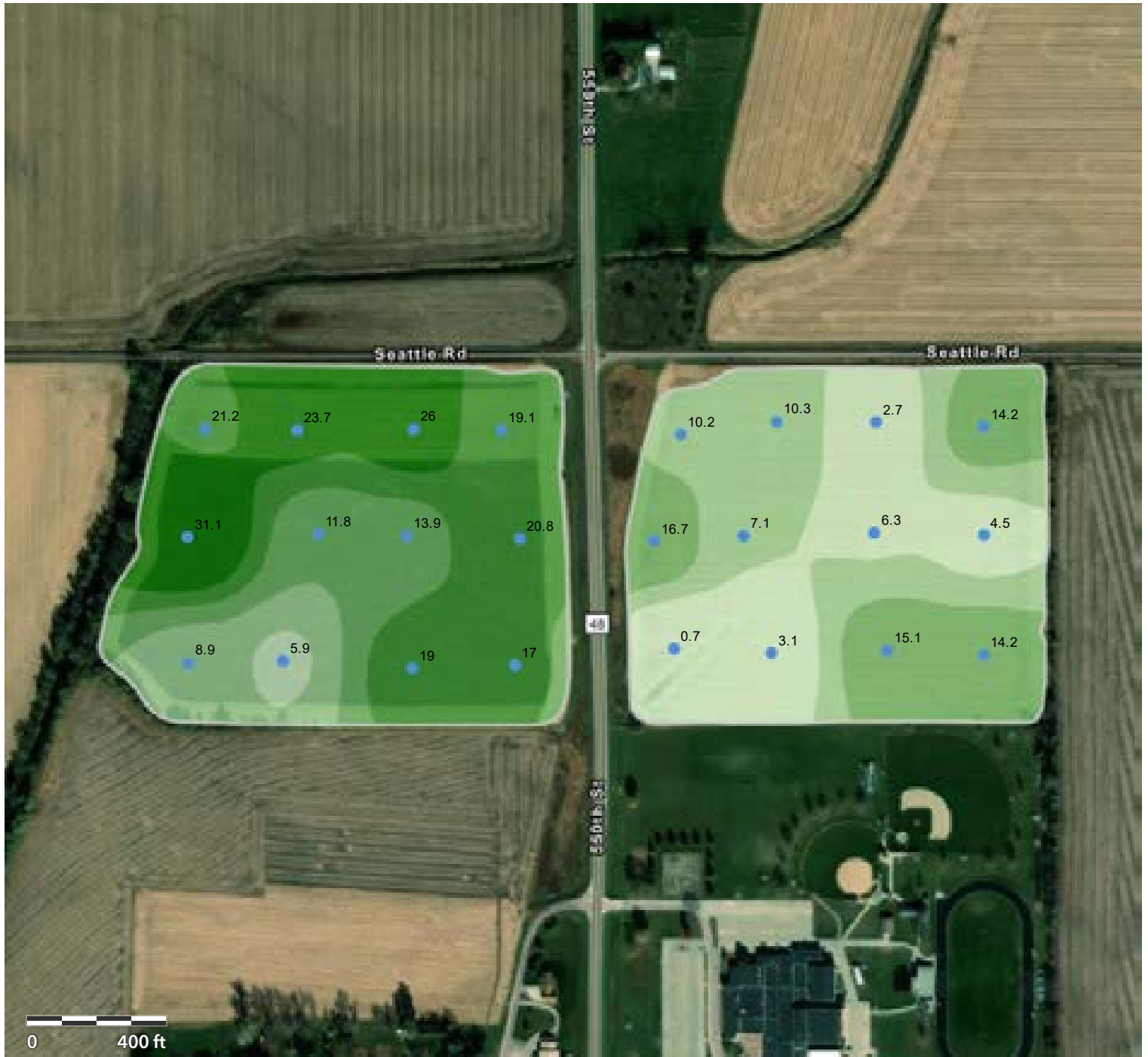
Farm: Conklin
Field: Conklin
(56.08 ac) 2021

Nutrient Map

H % - (0-6 in)



Minimum: 0.70 %
Average: 13.48 %
Maximum: 31.10 %



Farm: Conklin
Field: Conklin
(56.08 ac) 2021

Nutrient Map

S (ppm) - (0-6 in)

- 0.00 - 4.00 (0.00 ac)
- 4.00 - 6.00 (3.05 ac)
- 6.00 - 8.00 (43.17 ac)
- 8.00 - 10.00 (9.85 ac)
- 10.00 - 15.00 (0.00 ac)

Minimum: 5.00 ppm

Average: 7.42 ppm

Maximum: 9.00 ppm



Farm: Conklin
Field: Conklin
(56.08 ac) 2021

Nutrient Map

Zn (ppm) - (0-6 in)

- 0.00 - 0.20 (0.00 ac)
- 0.20 - 0.40 (3.79 ac)
- 0.40 - 0.80 (39.19 ac)
- 0.80 - 0.90 (2.30 ac)
- 0.90 - 1.00 (10.80 ac)

Minimum: 0.30 ppm

Average: 1.21 ppm

Maximum: 11.50 ppm

